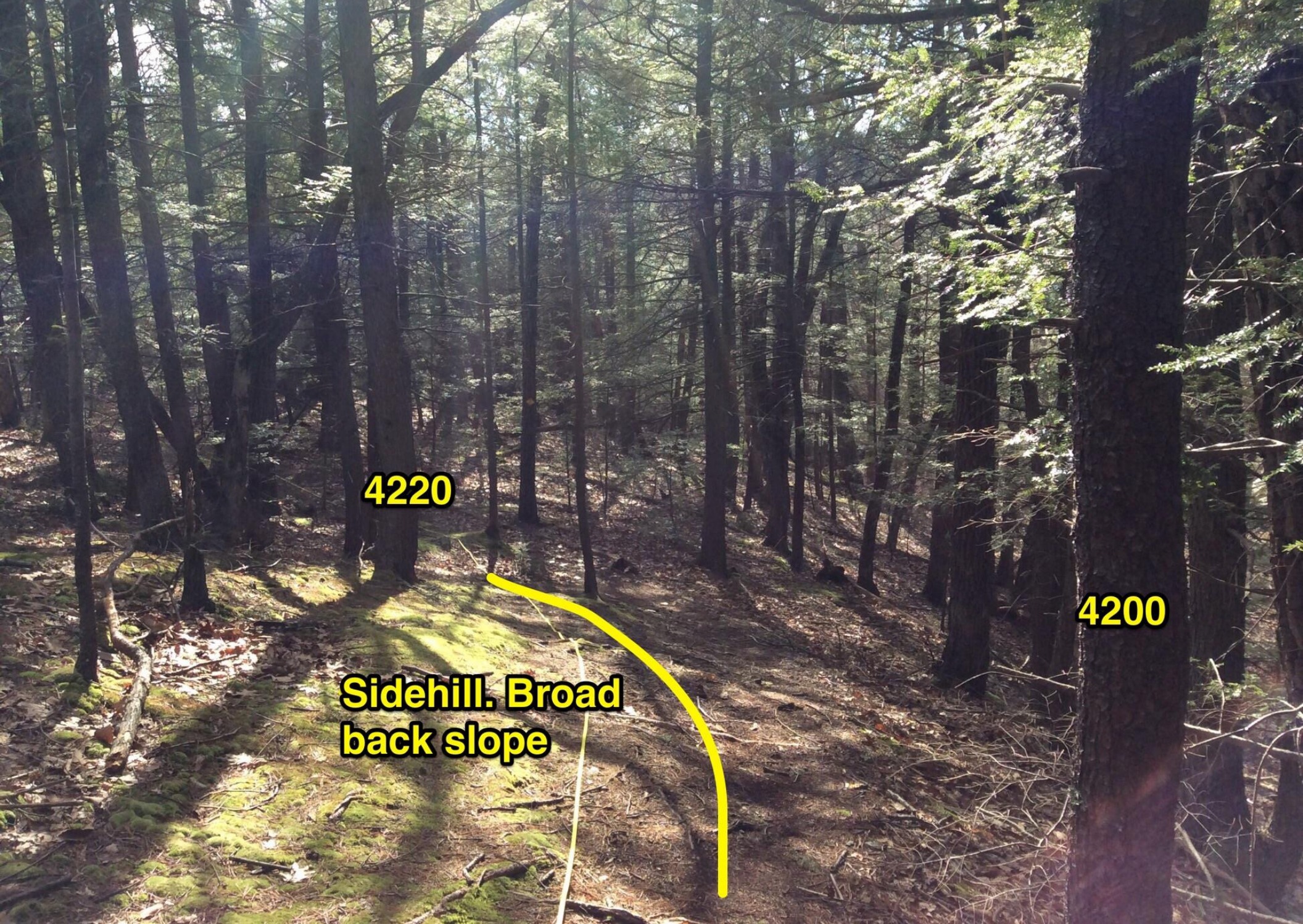




Define tread

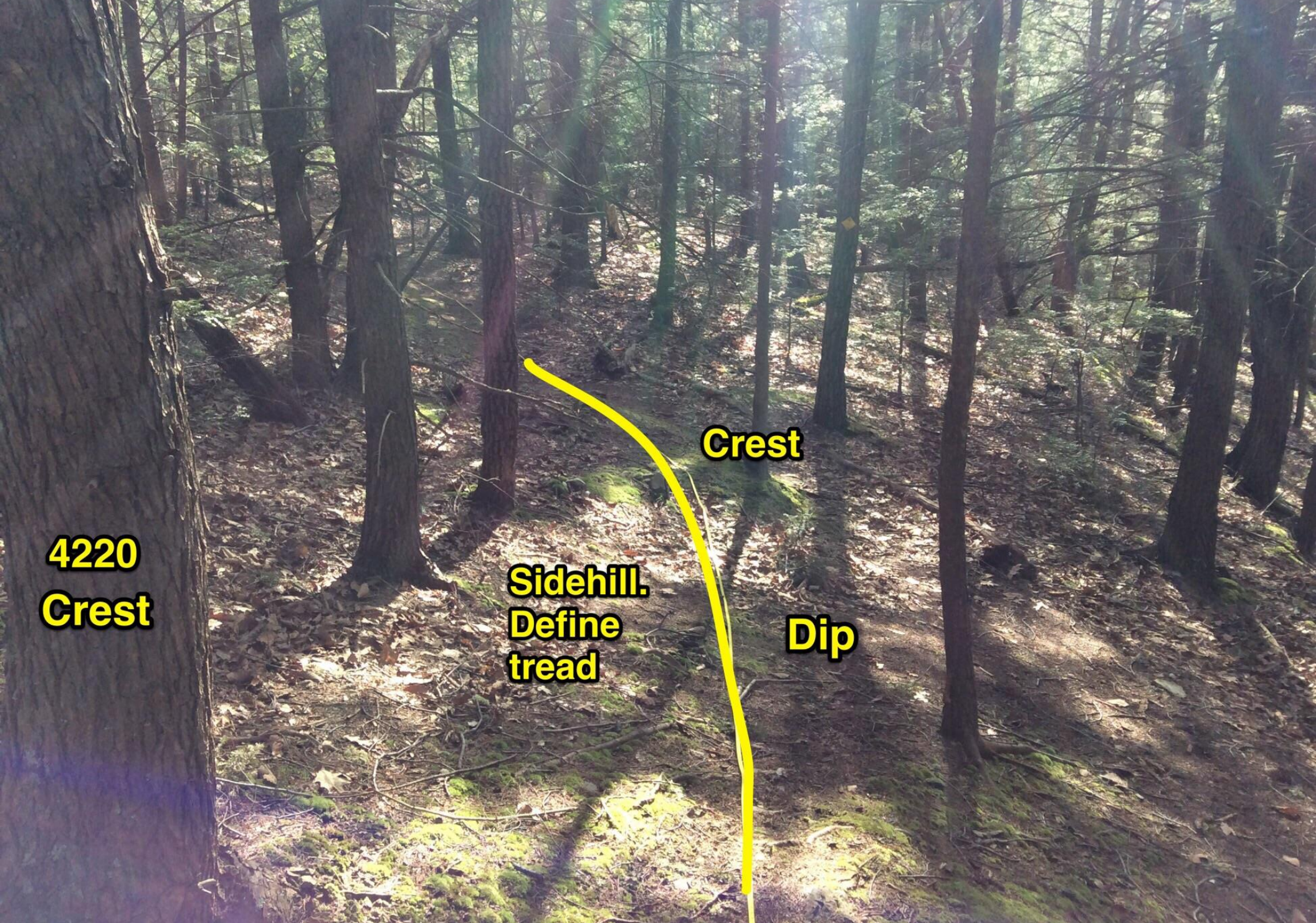
4100



4220

4200

**Sidehill. Broad
back slope**

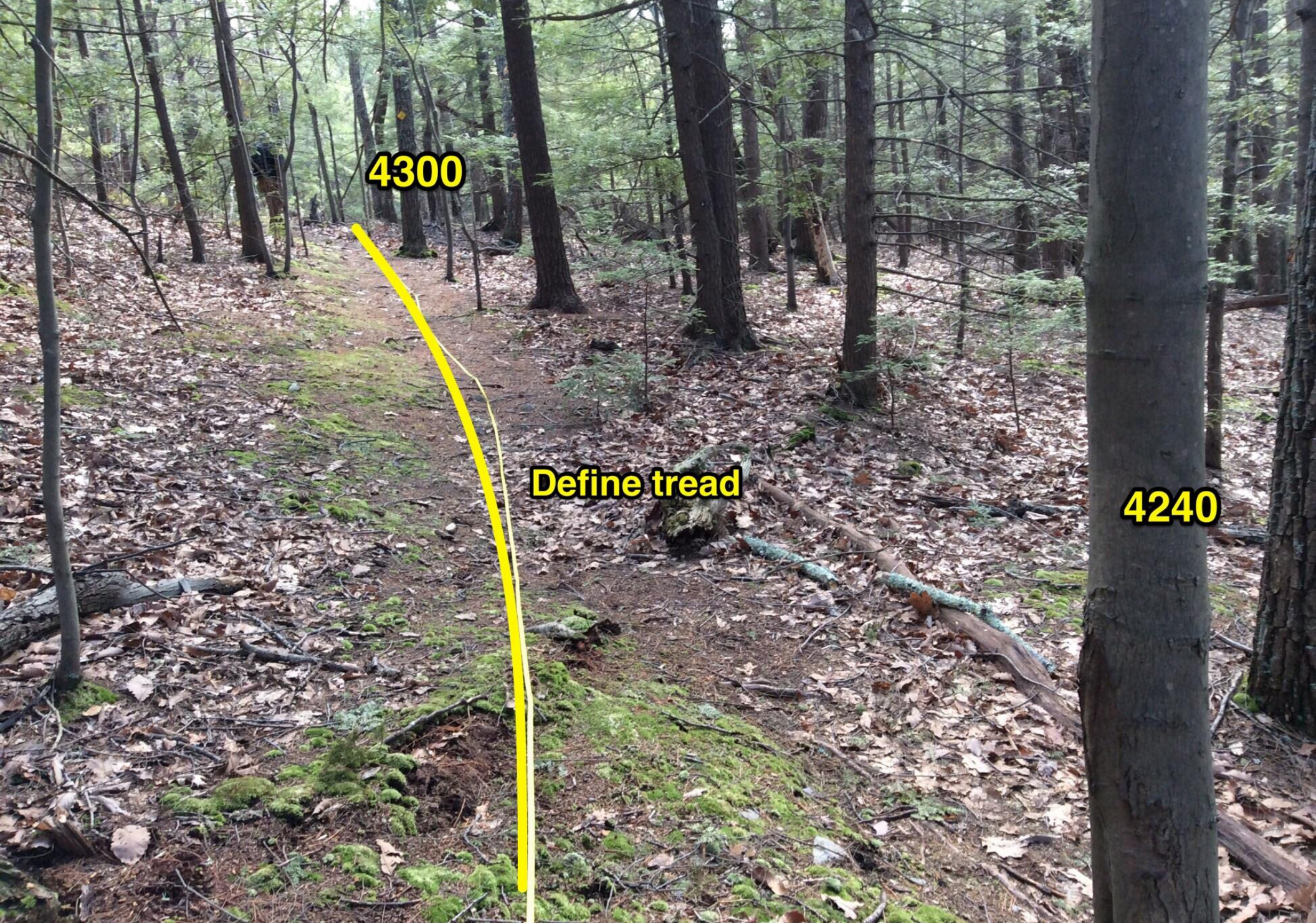


**4220
Crest**

**Sidehill.
Define
tread**

Crest

Dip



4300

Define tread

4240



Define tread

4355

4300



4355

Define tread



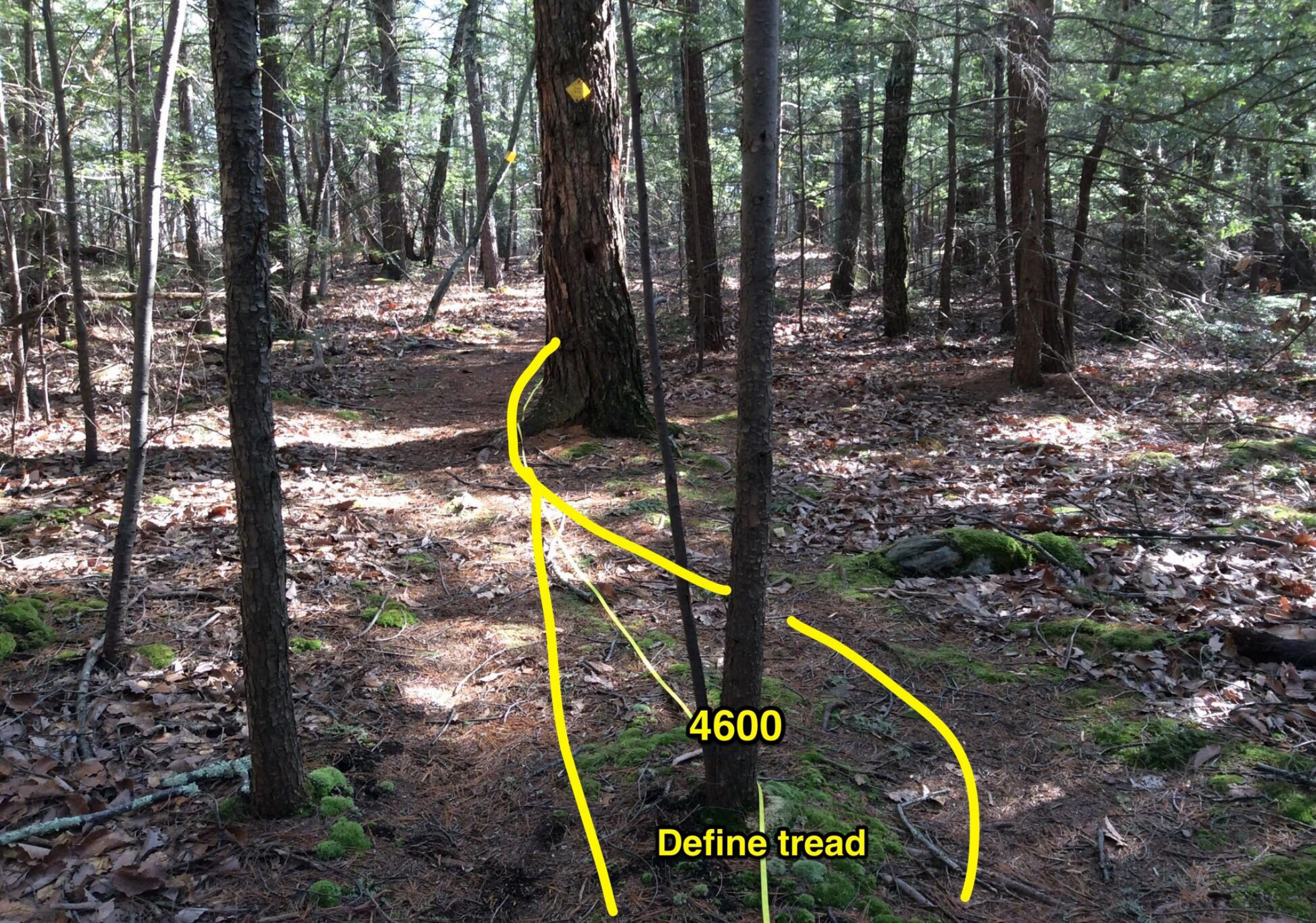
Define tread

4400

4500

Define tread





4600

Define tread



Define tread

4700



4800

Define tread

4900

Define tread



5000

Define tread



Define tread

5055



5100

Define tread



5200

Define tread

5300

Define tread





5400

Define tread



5400

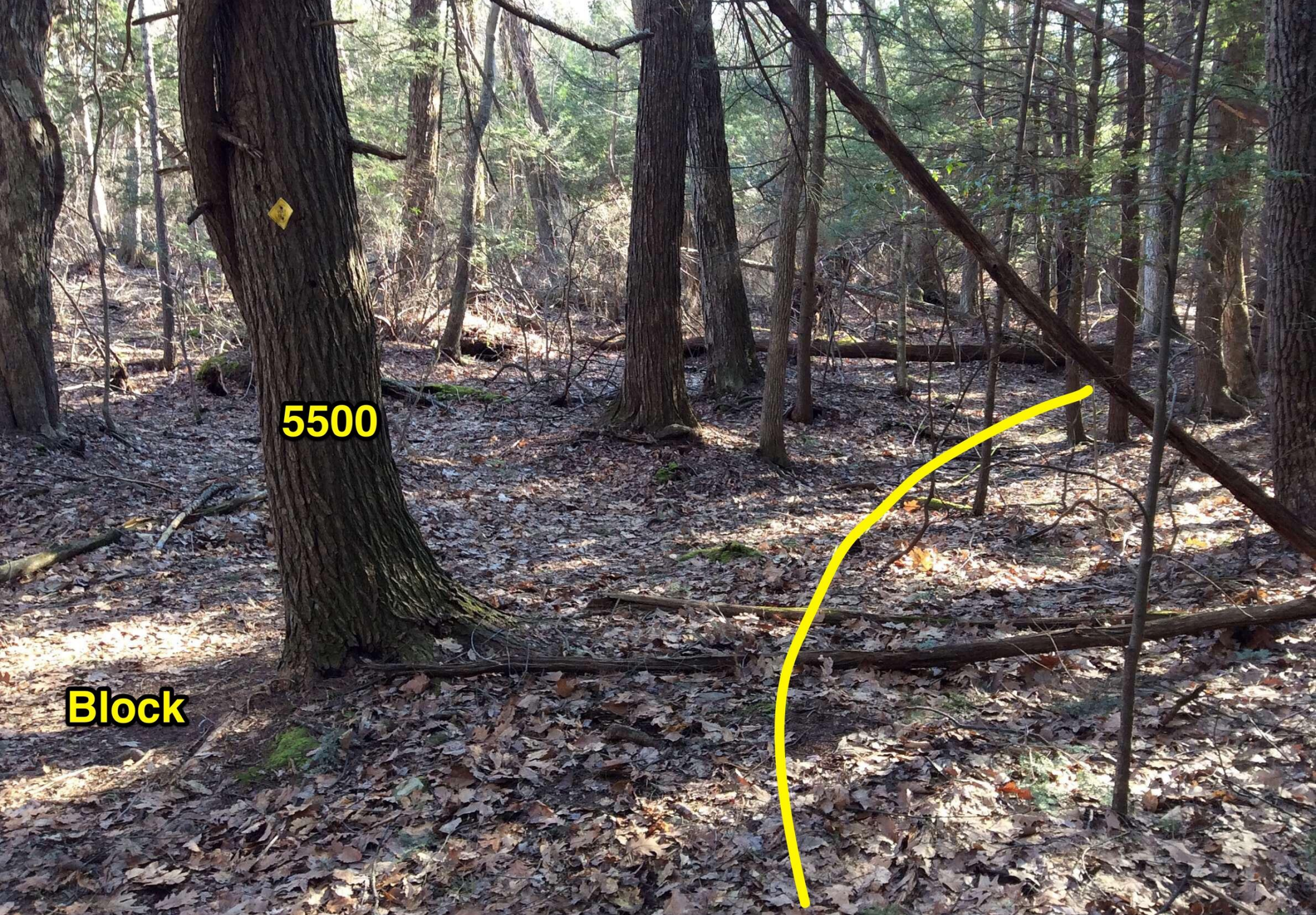
5441-5422

**312/1500
(20%)
No stairs.**

5500

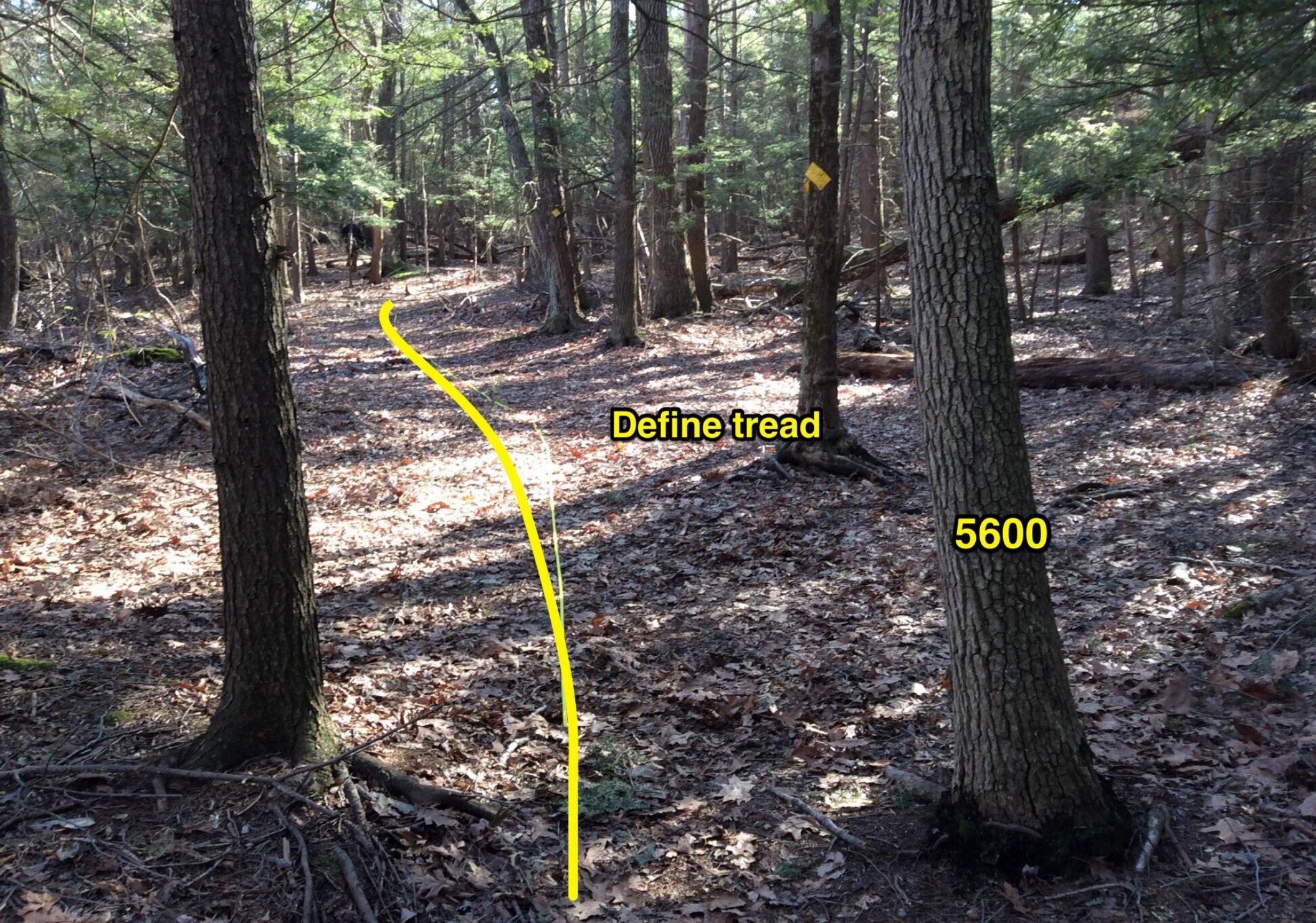
Define tread

5441



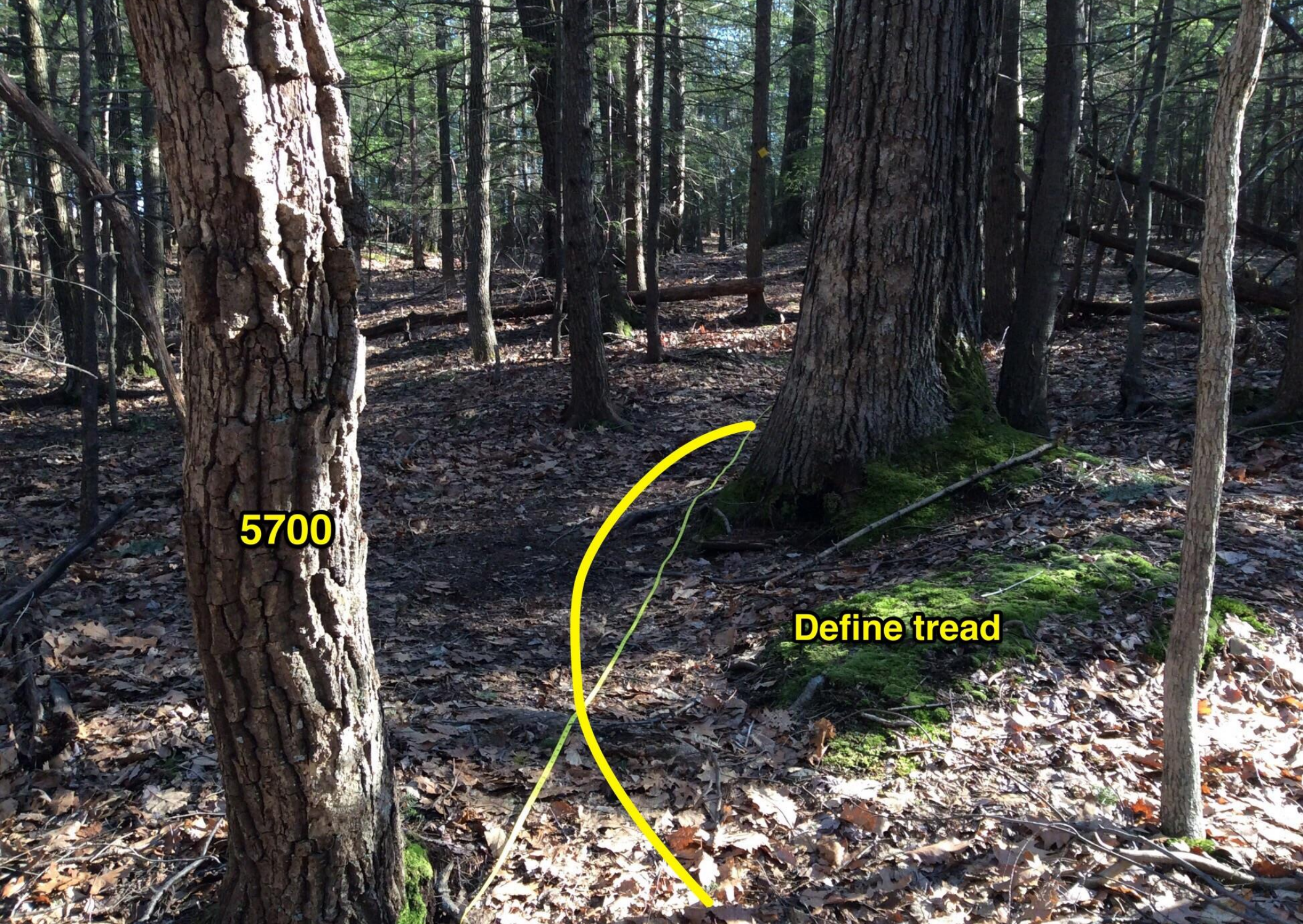
5500

Block



Define tread

5600



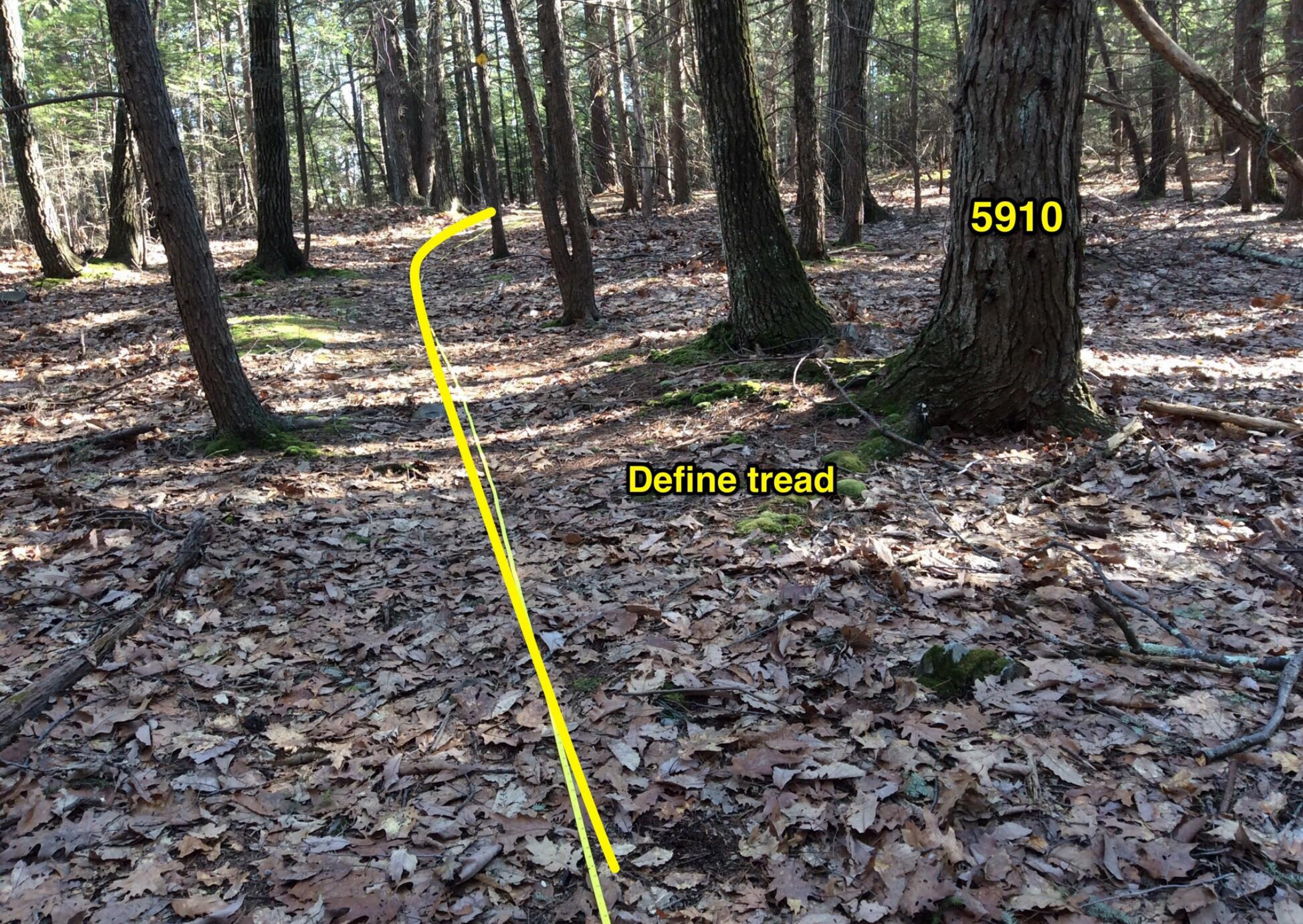
5700

Define tread



Define tread

5840



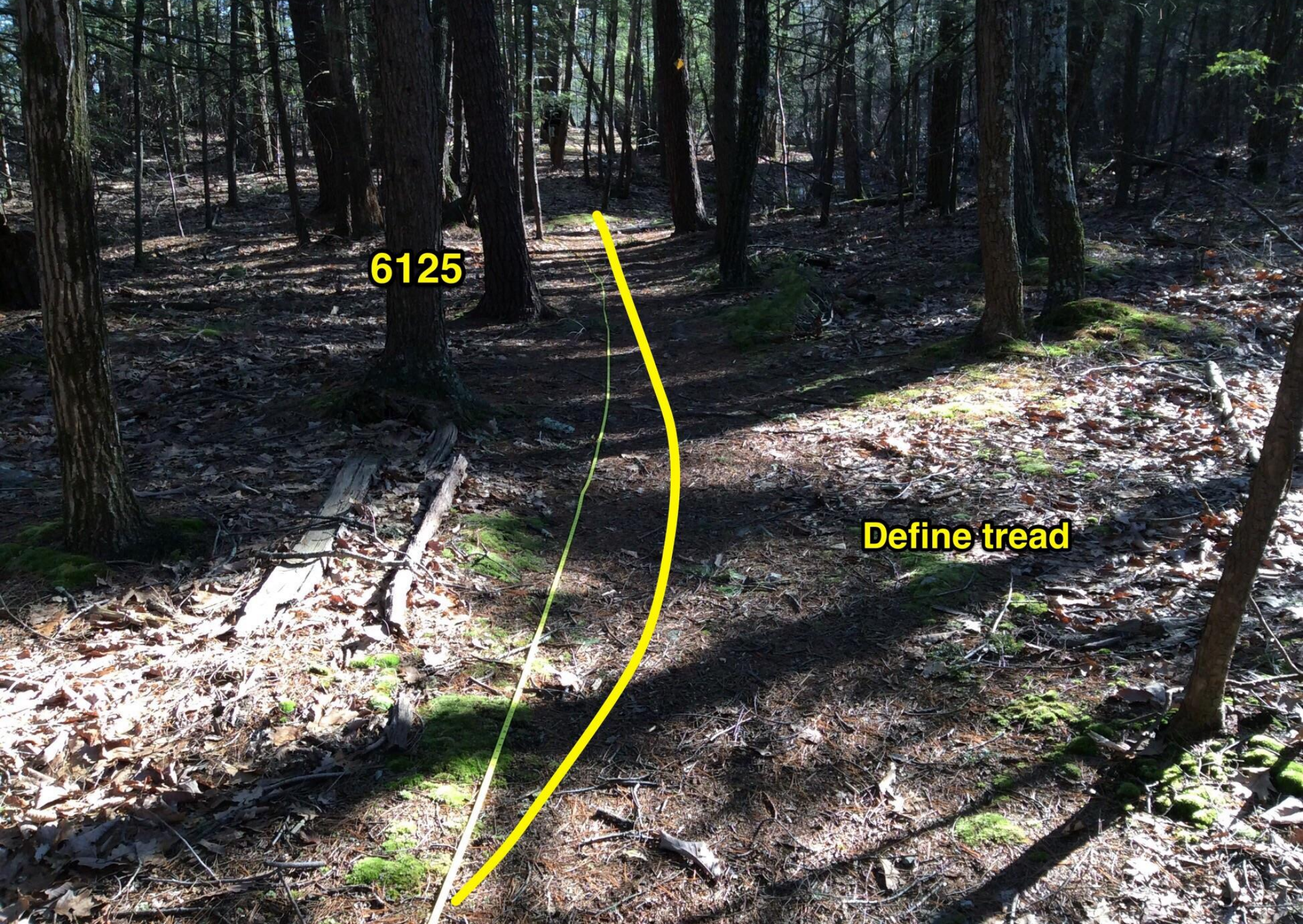
5910

Define tread



Define tread

6000



6125

Define tread

6225

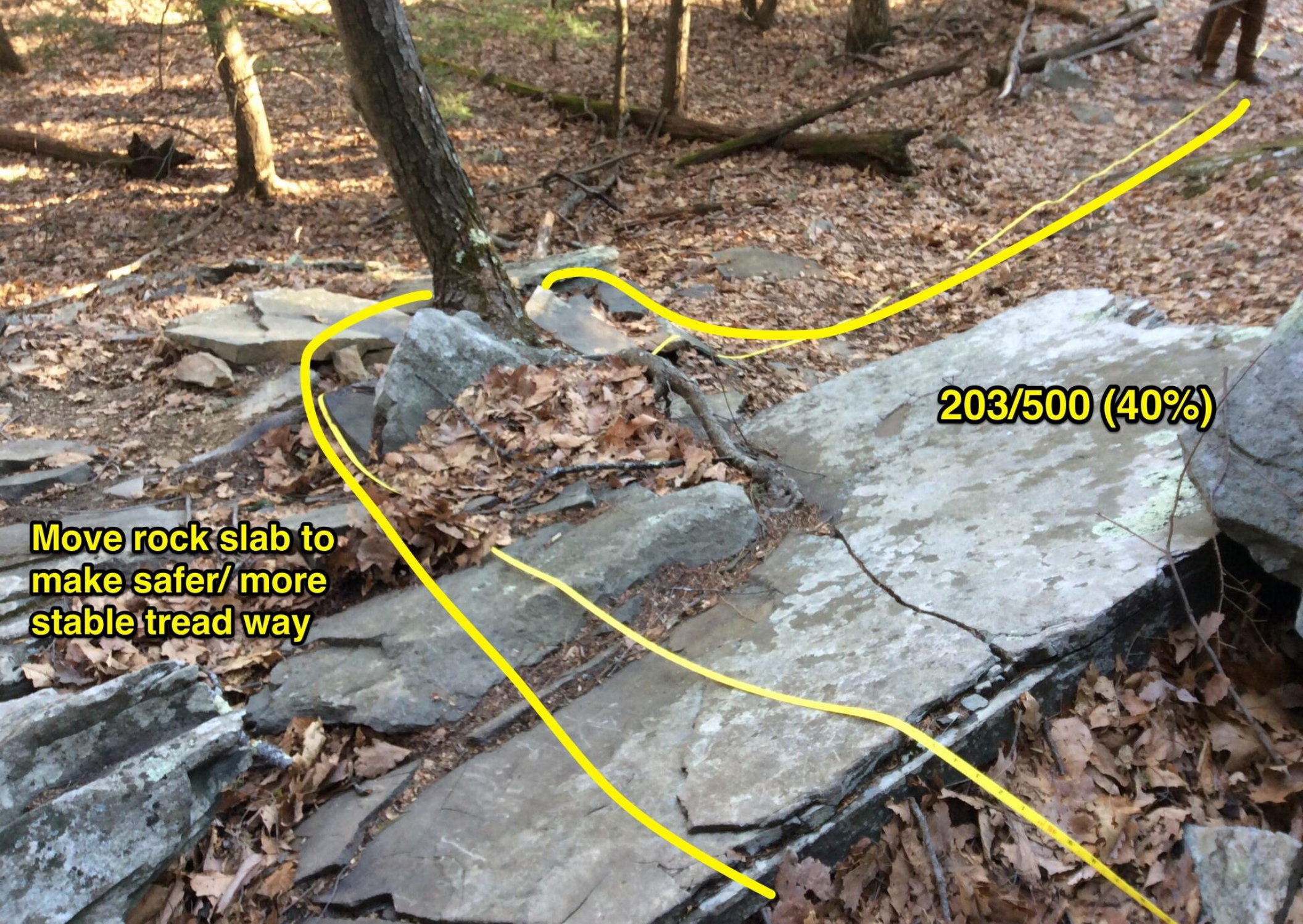
Define tread





6300

Define tread



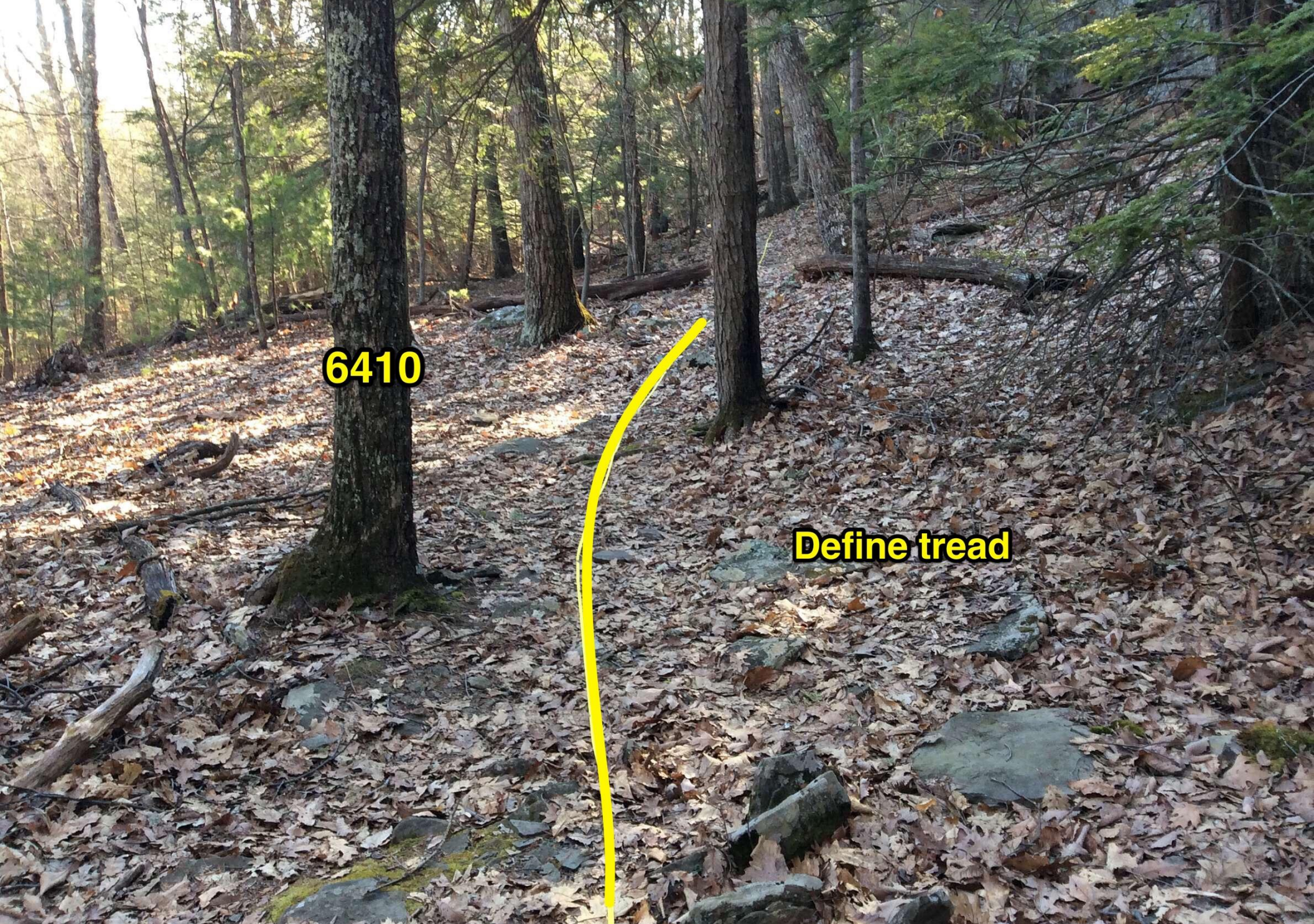
Move rock slab to make safer/ more stable tread way

203/500 (40%)



View of the previous section from 3 different perspectives.





6410

Define tread



6525

Take out



6600

Define tread

6725

Define tread



6800

Define tread

6900

Define tread



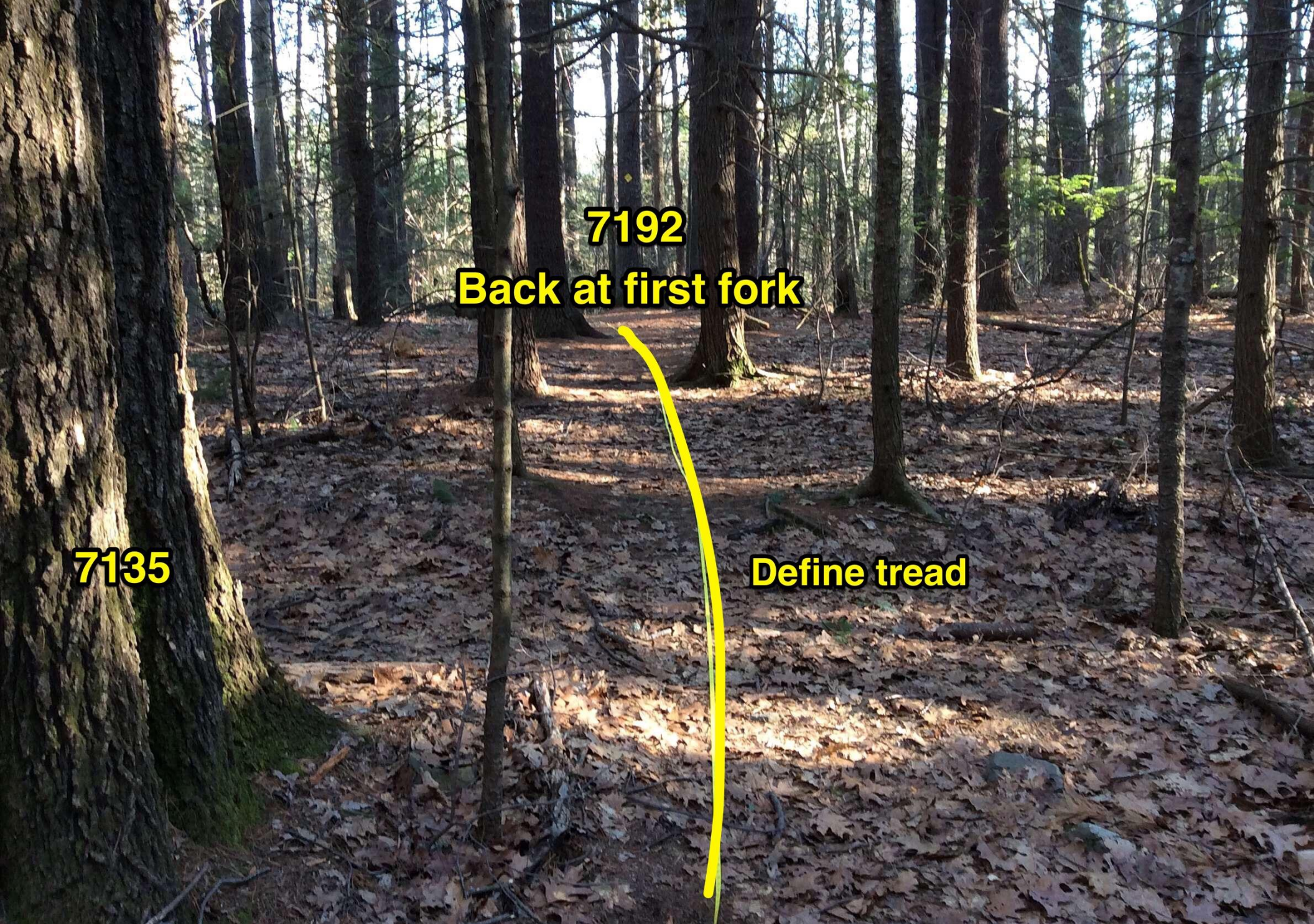
7005

Define tread



7120

Define tread



7192

Back at first fork

7135

Define tread