



Pine Meadow Connector Final Report

October 2014

Prepared for:

Sterling Forest Backcountry Trails Program

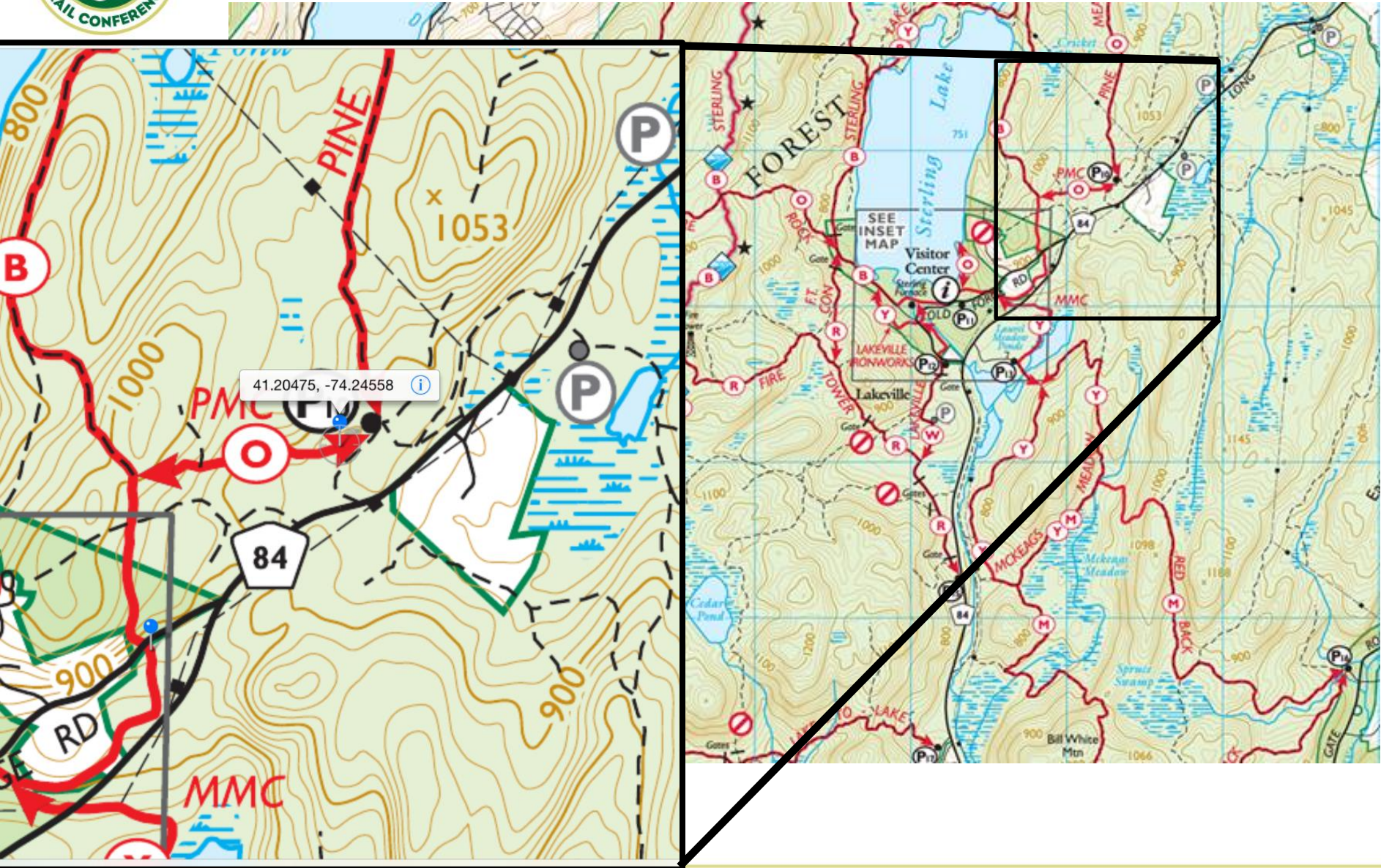
(Sterling Forest State Park, NY-NJ Trail Conference,
NYS Office of Parks, Recreation, and Historic Preservation)

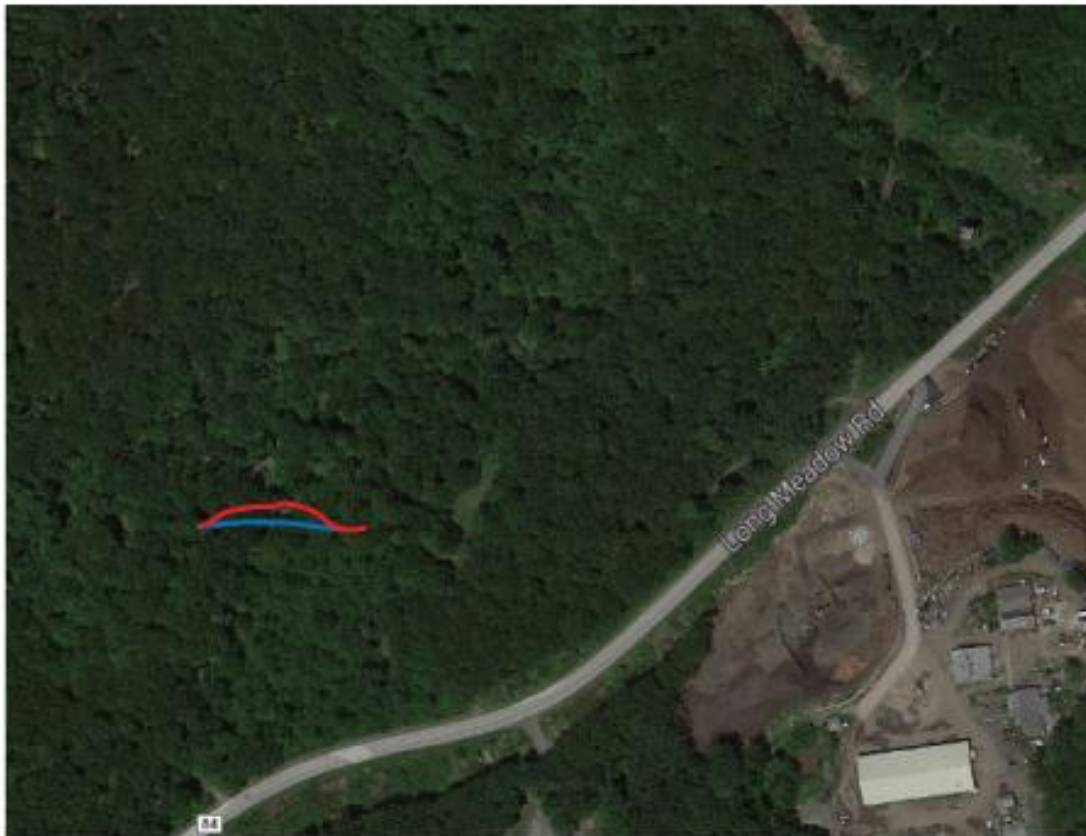
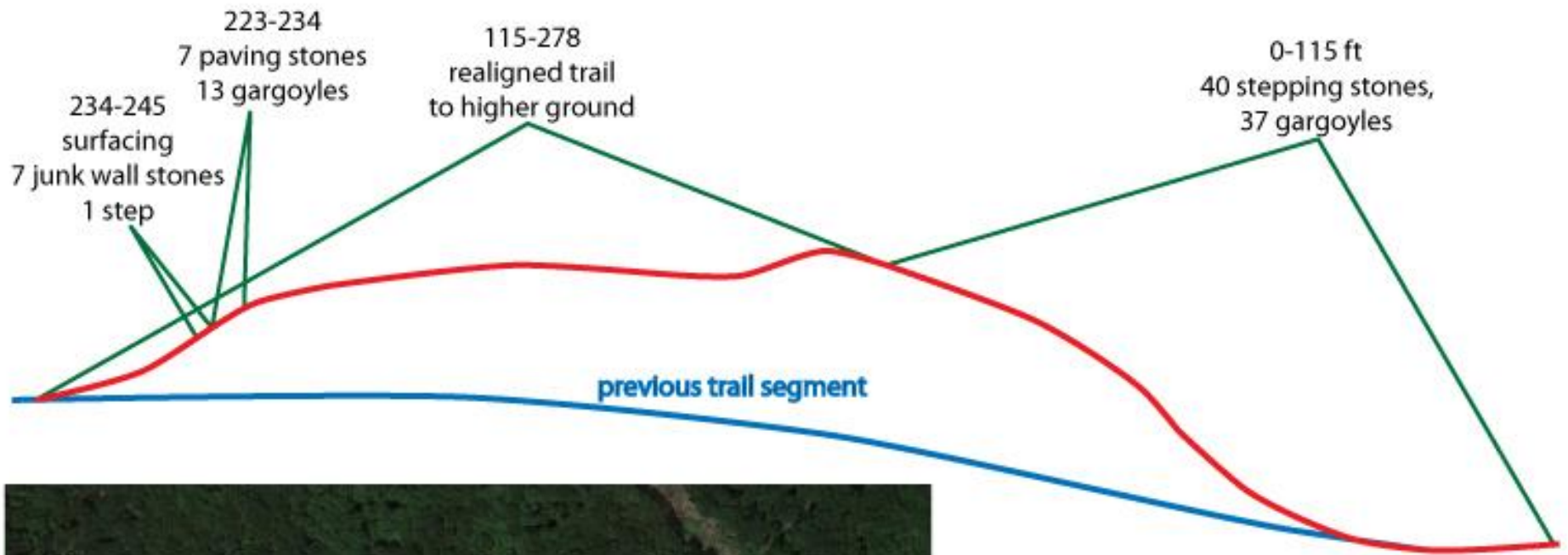
Prepared by: NY-NJ Trail Conference



Site Location: Pine Meadow Connector

Connecting People with Nature since 1920





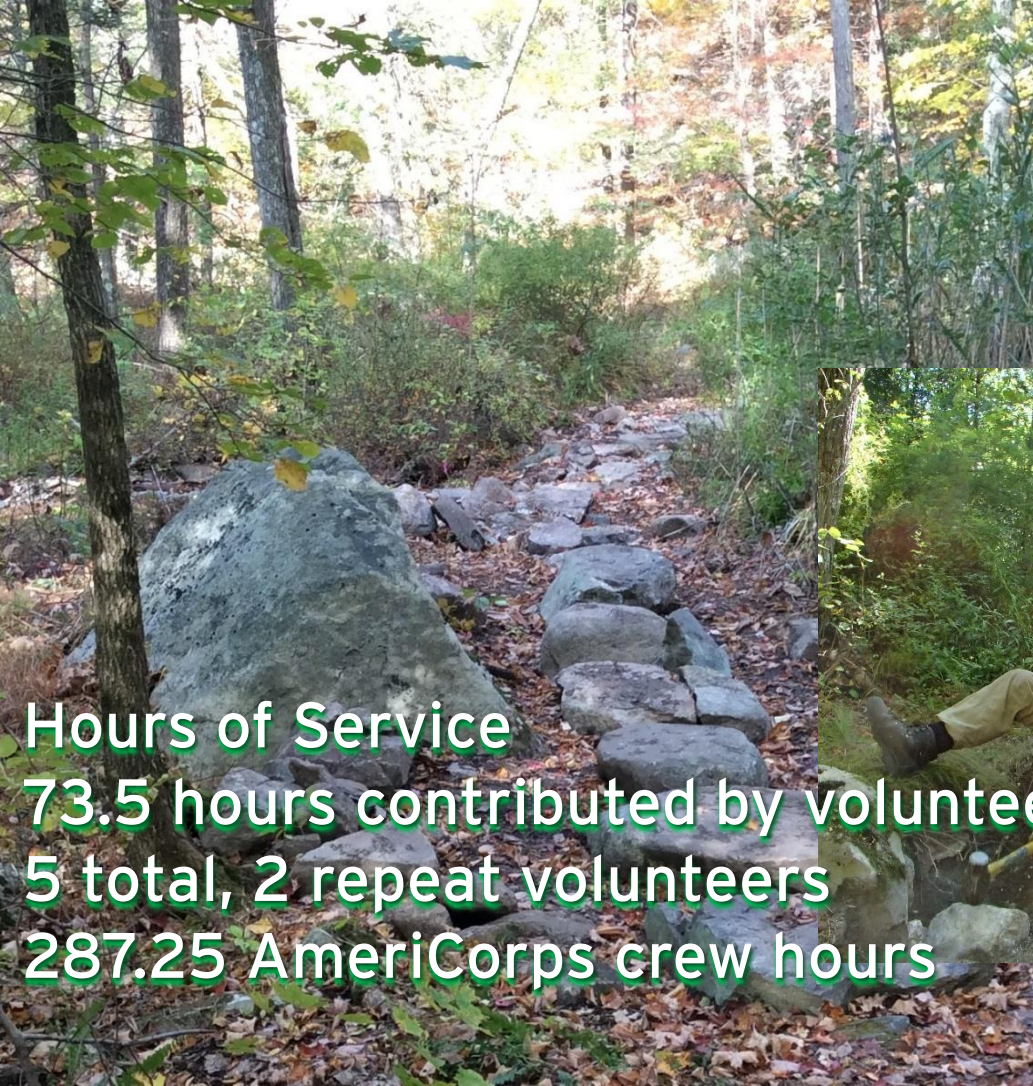
The 278 foot realignment and stone placement was conducted from September 9th to October 3rd, 2014.

- 40 stepping stones, 7 paving stones, and 37 gargoyle/coping stones
- A 163 ft realignment to raise the trail above a low location with periodically wet ground as a means to avoid unnecessary stone work
- This project entailed 287.25 crew hours, and 73.5 volunteer hours



Volunteer Achievements:

Connecting People with Nature since 1920



Hours of Service
73.5 hours contributed by volunteers
5 total, 2 repeat volunteers
287.25 AmeriCorps crew hours



Connecting People with Nature since 1920

Construction Achievements: Stepping Stones

Before:



After:

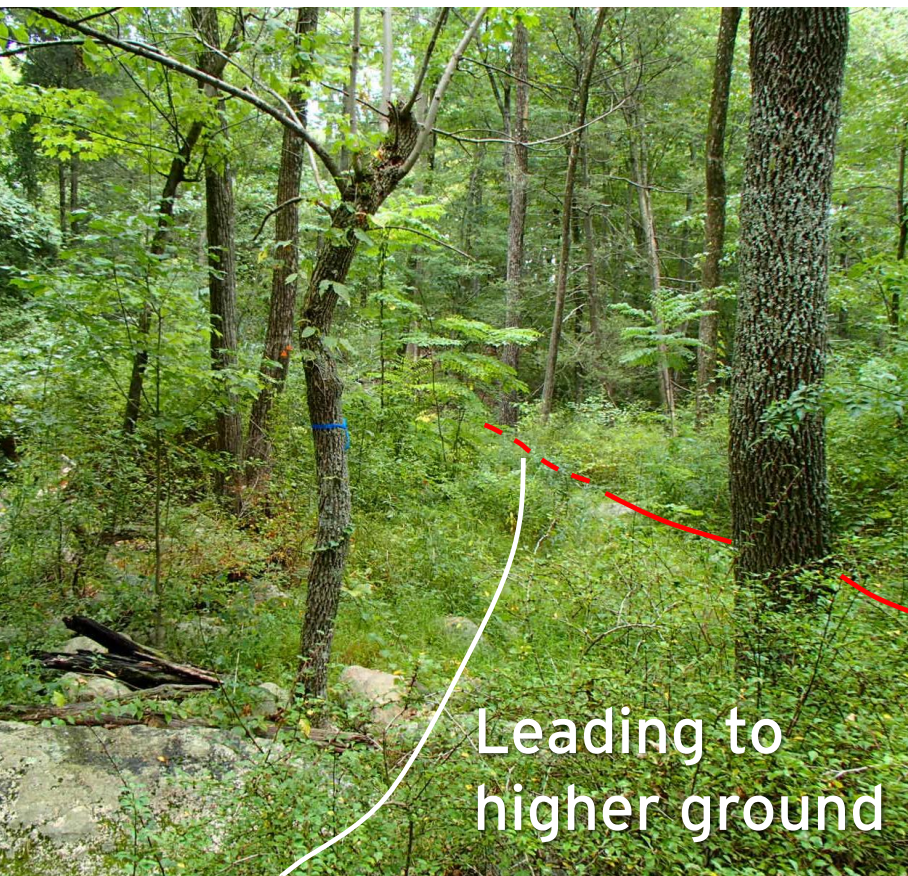




Connecting People with Nature since 1920

Construction Achievements: Stepping Stones

Before:



After:





Connecting People with Nature since 1920

Construction achievements: Stepping Stones

Before: **Same rock**



After: (looking away from before rock)



Higher ground begins



Connecting People with Nature since 1920

Construction Achievements

Before:

After: connection of new higher segment
away from low segment 20 ft to right



Meets old alignment



Connecting People with Nature since 1920

Construction Achievements



