



# Appalachian Way East trail segment at Fahnstock State Park Final Report

Prepared for: OPRHP, Fahnstock State Park

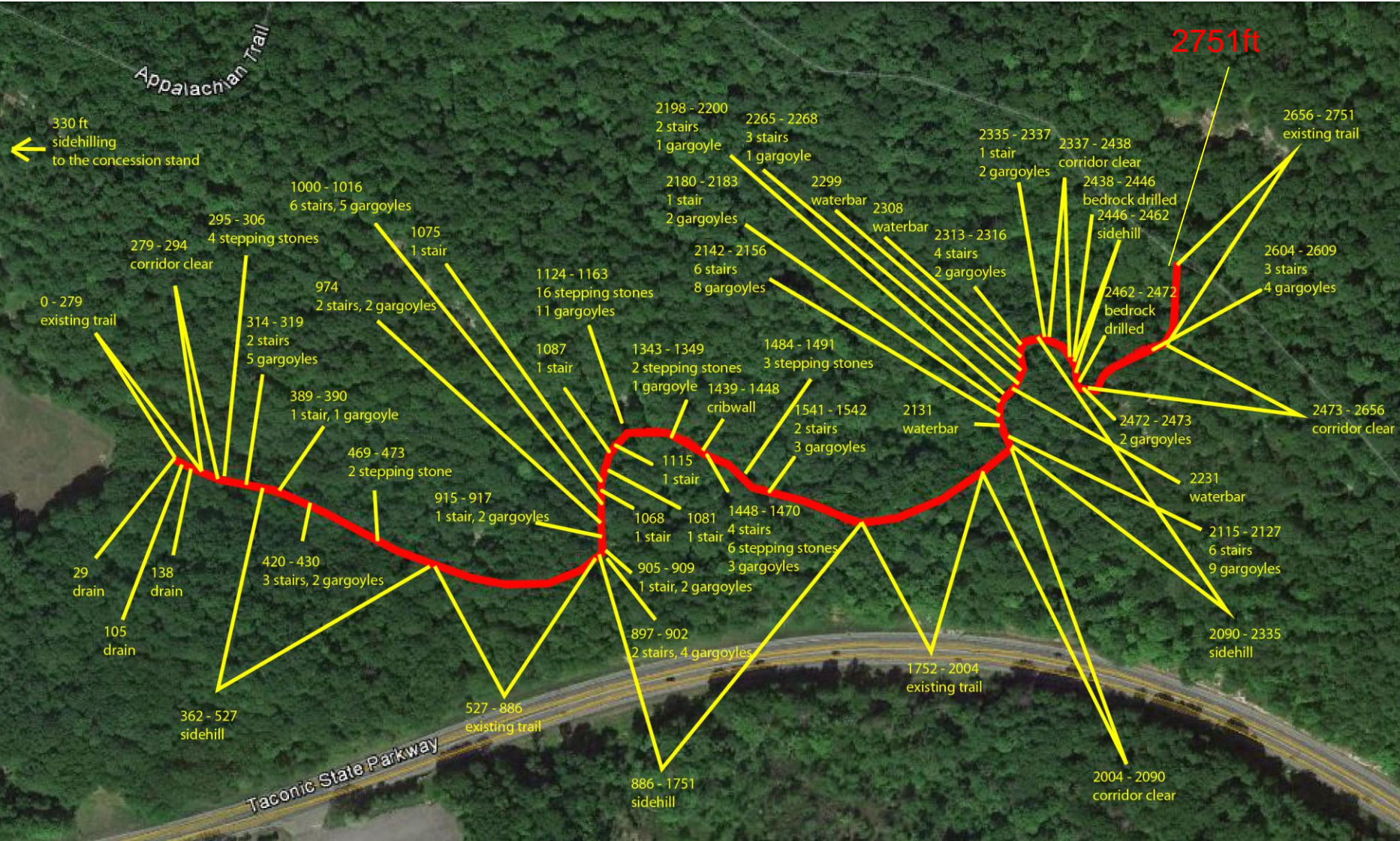
Prepared by: NYNJTC

October 2015





Connecting People with Nature since 1920

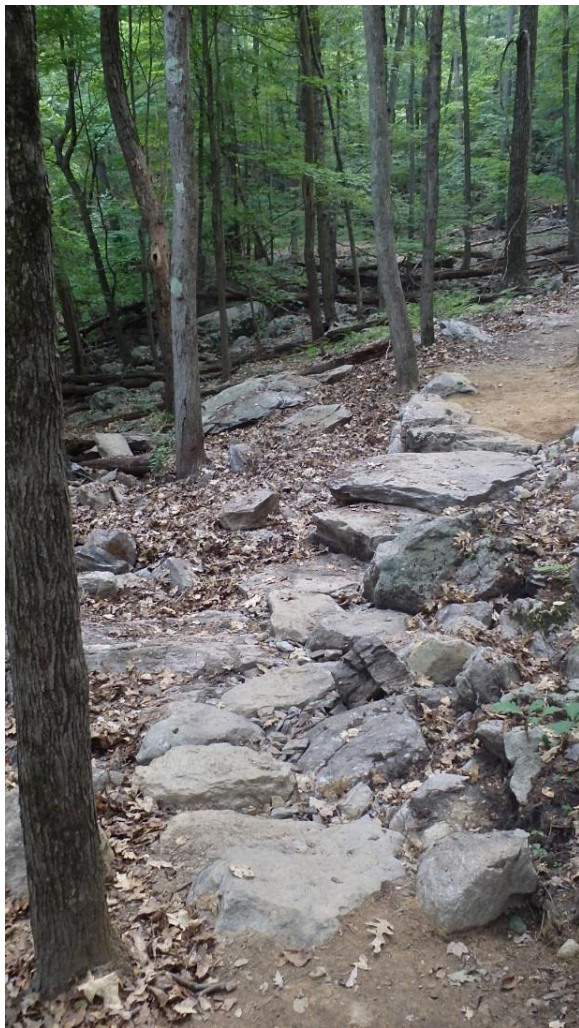




# Construction Achievements

Connecting People with Nature since 1920

Linear ft of new trail: 1,766 ft  
Sidehilling new segment: 1,264 ft  
Sidehilling on existing segment: 330 ft  
Cribwall: 30 sq ft  
Stairs: 56  
Gargoyles: 71





Connecting People with Nature since 1920

## Volunteer Achievements

Through the months of May to October 2015 a total number of 138 volunteers completed 1,168 hours of volunteer service.

Hours completed:

3,653 hrs: AmeriCorps

1,168 hrs: Volunteers





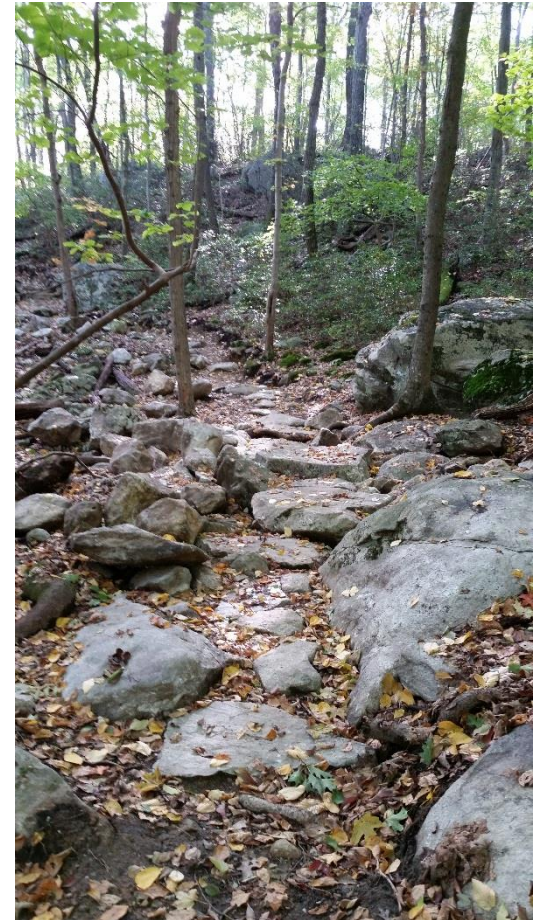


Connecting People with Nature since 1920

## Construction Achievements: Stepping stones through a bog



## Armoring/stepping stones





Connecting People with Nature since 1920



Before



After





Connecting People with Nature since 1920

## Construction Achievements: Stepping stones through a intermittent stream





Connecting People with Nature since 1920

## Construction Achievements:



-6 stairs and 9 gargoyles

Total steps: 56  
+Gargoyles: 71



Connecting People with Nature since 1920

## Construction Achievements:



-5 stairs built against bedrock,  
6 gargoyles, 1 water bar,



Connecting People with Nature since 1920

## Construction Achievements: stepping stones and pavers



Before



After



Connecting People with Nature since 1920

## Construction Achievements: Bench cutting



Sidehilling new segment: 1,264 ft  
Sidehilling on existing segment: 330 ft



Connecting People with Nature since 1920



**Construction Achievements:**  
3 tier cribwall  
3 ft tall  
10 ft long





Connecting People with Nature since 1920

## Construction Achievements: Corridor clearing



Before



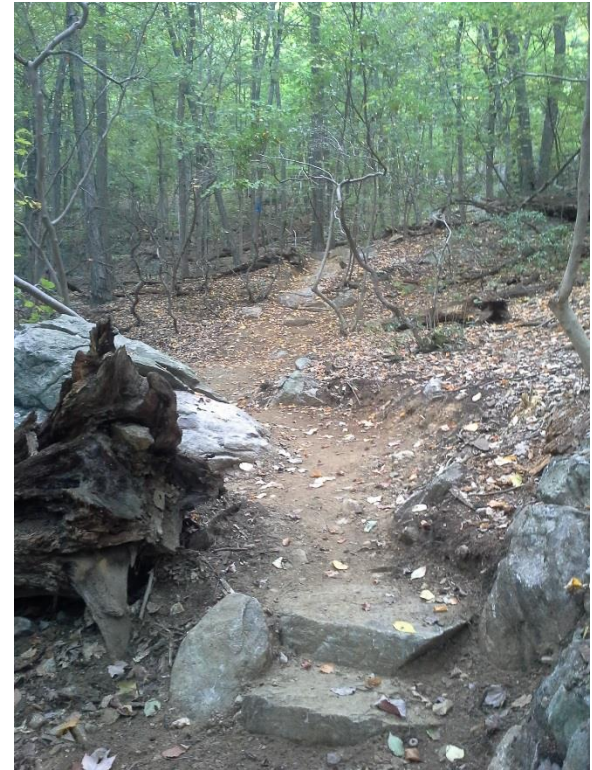
After



Connecting People with Nature since 1920



Before



After





Connecting People with Nature since 1920



Before



After



Connecting People with Nature since 1920

## Stone Steps and bedrock combinations



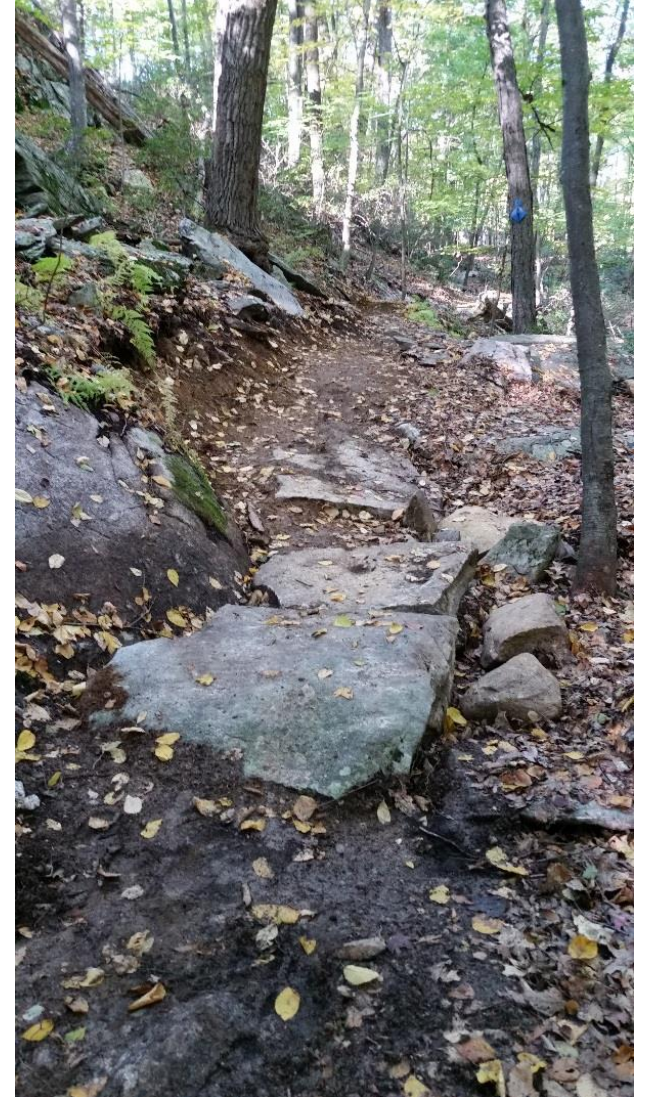


Connecting People with Nature since 1920

## Root steps



## Elevated armored tread with stone





Connecting People with Nature since 1920

## Construction Achievements:

Natural pinch point  
above 3 stairs



6 stairs through  
a tight pinch





Connecting People with Nature since 1920



Before



After



Connecting People with Nature since 1920

## Construction Achievements:

Drilling and chiseling bedrock to create step landings







Connecting People with Nature since 1920

## Construction Achievements: Drilling into bedrock to make tread



Before



After





Connecting People with Nature since 1920





Connecting People with Nature since 1920

# Thank you for your support!



Field Manager: Erik Mickelson; AmeriCorps Taconic Crew: Matt, Rebecca, Jake, Chris; Program Coordinator: Hank Osborn